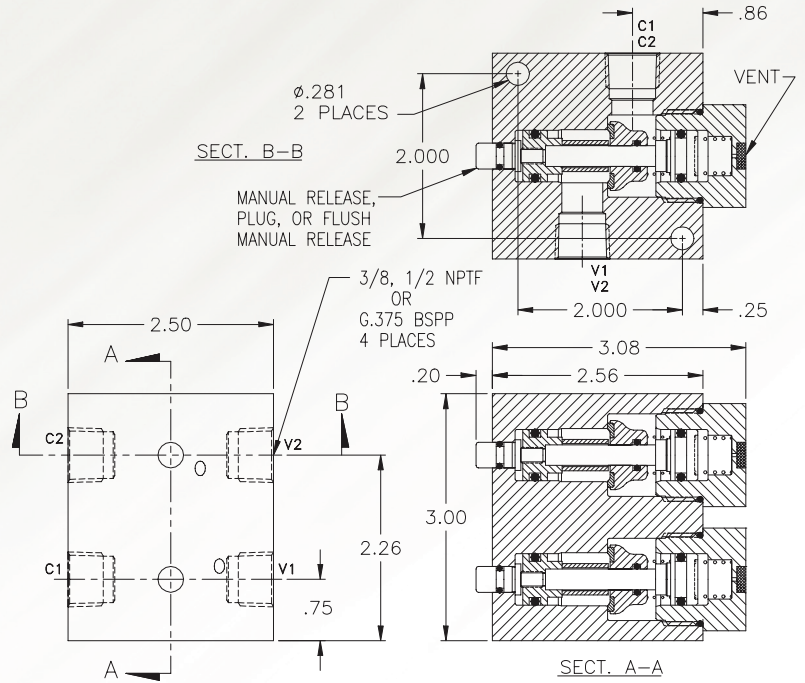
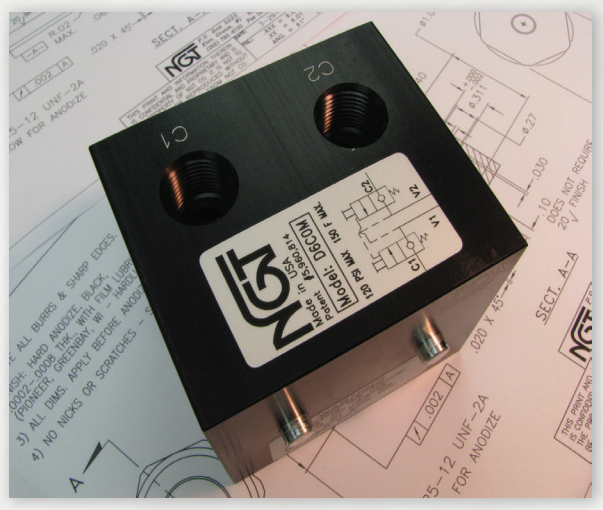


# 3/8 & 1/2 NPTF & 3/8 BSPP Dual Check Valves



DIMS. APPLY TO BOTH 3/8 & 1/2 NPTF & BSPP MODELS

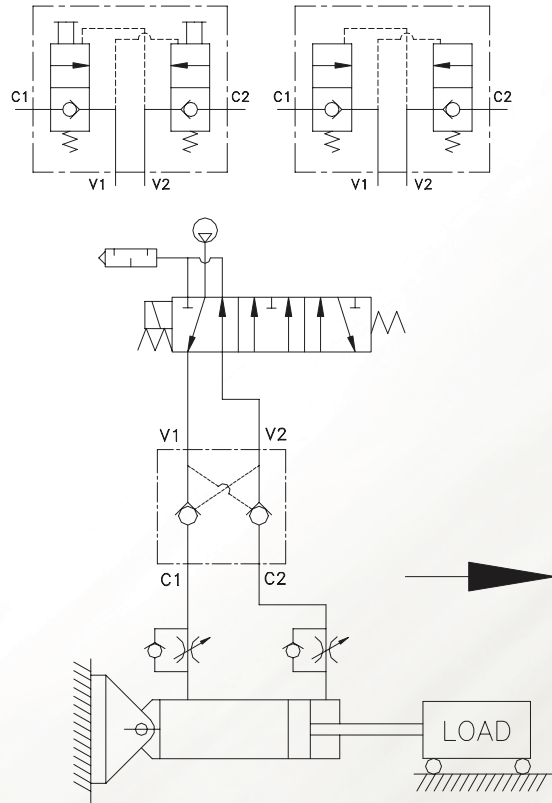
- Dual Manual Release
- .0000522 cc/min Leak Rate
- High Temp Available
- G.375 BSPP In Stock

## Basic Operation:

In the event of a pressure loss this unique valve maintains cylinder position by locking air in both cylinder ports. Eliminate drift due to leaky spool valves. A manual release is available to release trapped air from both ports independently.

## Operating Data:

- Max. Pressure: 150 psi
- Min. Pilot Pressure: 40 psi  
20 psi (see table '-K18')
- Adv & Retract Ratio: The pressure ratio of advance/retract or retract/advance should not be greater than 2.
- Temp. Range: -20 -150 F  
30-350 F (see table)
- Cycle Rate: 1 cyc./sec. max.
- Flow Capacity (Cv): 3.8
- Cracking Pressure: 1-2 psi
- Service: Properly filtered dry air or lubricated air.



MODELS	3/8 NPTF	3/8 BSPP	1/2 NPTF
No Manual Release	<b>D6C00</b>	<b>DG6C00</b>	<b>D8C00</b>
Manual Release	<b>D6C0M</b>	<b>DG6C0M</b>	<b>D8C0M</b>
Flush Manual Release	<b>D6CFM</b>	<b>DG6CFM</b>	<b>D8CFM</b>

For high temp seals add (-V) to the model # (ex. D6C0M-V).  
For low pilot pressure add (-K18) to the model # (ex. D6C0M-K18)